



Camp Mennoscah  
9458 SE 40<sup>th</sup> St, PO Box 65  
Murdock, KS 67111  
620-297-3290  
[www.campmennoscah.org](http://www.campmennoscah.org)

## POLICIES AND INFORMATION FOR RENTAL GROUPS

### *Mission Statement*

*The mission of Camp Mennoscah is  
to encourage all to follow Jesus Christ  
to live as a people of healing and hope  
to seek God's peace  
to practice love, forgiveness and hospitality  
to affirm diversity and healing brokenness  
to experience God's creation.*

For your safety and enjoyment, here are some guidelines for the use of equipment and grounds. Any questions should be referred to the camp director or staff.

### General

- The contact person will be responsible for the use of the facility and will help enforce all camp policies. The contact person should also have a list of all persons in the group available for camp staff in case of an emergency.
- Groups prepare their own meals and provide their own bedding. The Retreat Center and Bluestem have pillows and a comforter, but no linens. Bed linens (pillowcase, flat/fitted sheets) can be rented at these two facilities.
- Please drive inside the fenced area at the Dining Hall only for unloading; park cars outside the main gate. (During the summer, please do not park near Cottonwood, as that is reserved for summer staff.) **Please do not drive on the grass.** Please DRIVE SLOWLY and be careful as there are blind spots along the drive.
- Please leave all **alcoholic beverages, illegal substances, firearms, fireworks, snowmobiles, ATVs, motorbikes, and horses** at home. All Camp Mennoscah facilities and grounds are **tobacco free.**

## General (cont.)

- Please leave your **pets and animals** at home. Pets and animals of any size or kind are not allowed on Camp Mennoscah grounds or in facilities/buildings. Service animals are welcome.
- Please assist with our recycling program by following directions given upon arrival. Recycling signs and containers are found throughout camp. Please plan on using camp's dishes to cut down on waste material.
- Please **ASK** before moving large furniture or equipment in any facility. Please return all furniture or equipment to the location where you found it before your group leaves. All tables and chairs should be returned to their storage areas before leaving.
- Help keep prices down by following clean-up procedures given during your stay. Clean-up procedures are also posted in each building. We suggest assigning an individual person to help supervise clean-up. Camp Mennoscah staff will be available to answer questions. Camp must be left in a condition ready for the next group. Please report broken or depleted supplies to camp staff.
- A TV/DVD, LCD projector, and PA system are available for a minimal, additional charge. (Not available at Bluestem.)
- If mechanical problems are encountered with camp equipment, please notify the camp host immediately. It can be dangerous to try to fix them yourself, and we ask that you **DO NOT** attempt it without first asking. (If you do so, you may be billed for any expenses the camp might incur.)
- Since more than one group may be using camp facilities, please respect others' need for rest by keeping noise to a minimum after 11pm. Thanks!
- **Please allow time** at the beginning of your group's first meal or gathering time for a welcome from staff and, if staying at Main Camp, instructions on dishwashing procedures.
- Please let us know if the staff and their families will be invited to eat meals with your group.

(continued)

## Use of the Grounds

- Wildlife and plants are a part of camp. Do not disturb, catch, take home, tease, or destroy wildlife. **Please NO PICKING OF WILDFLOWERS, NO CUTTING OF TREES, and NO HUNTING.** Observe all state fish and game regulations. Hand fishing is prohibited.
- Canoes are available when the dam is in place (usually mid-April to mid-October). You are responsible for your group's water safety. Observe regulations posted at the canoe landing. Lifejackets are to be worn at all times while canoeing. Paddles are available near the canoes (two per canoe), but we ask that an adult from your group be responsible for them. **(Groups or individuals will be charged replacement costs of \$20 for a broken or lost paddle.)**
- **Adult supervision required** for all children (16 or younger) when engaged in water activities, at the river, or on the play structure (the "whale").
- When there is more than one group at camp, please be aware of how your activities and noise level may affect other groups. All activity areas are shared unless reservations have been made. Shared areas include: sports fields, the river, canoes, playground, campfire amphitheater.
- Please make sure any sports or activity equipment is returned to the sports shed by the softball diamond before you leave. Any broken equipment should be reported immediately to camp staff. Damages beyond normal wear are the financial responsibility of your group.
- The pavilion by the Retreat Center is reserved for groups using the Retreat Center.
- The camp bell is reserved for groups using Main Camp.

### **Outdoor Activities Available**

Disc Golf Course  
Basketball  
Sand Volleyball  
Horseshoes  
Frisbee  
Carpetball  
Whale (play structure)\*  
Hiking Trails  
Golf ball toss  
Gowling  
Kickball  
Softball  
Canoeing\*\*  
Swimming\*\*+  
Fishing\*  
River play\*\*  
Amphitheatre with campfire\*\*  
Challenge Course\*\*+  
Kettle-made Popcorn\*\*+

### **Indoor Activities Include**

Foosball  
Ping pong  
Table games

\*Requires adult supervision for children 16 years or younger  
\*\* Seasonal  
+Available at additional charge

## Use of the Grounds (cont.)

- The swimming pool is typically available for use from Memorial Day to Labor Day (confirm actual dates with camp staff). Groups using the swimming pool are required to provide their own lifeguards. It is recommended for the size of the pool that two lifeguards be on duty to supervise pool safety. Camp Mennoscah may be able to provide a lifeguard or lifeguards for groups with prior arrangements at an additional cost. Lifeguards **may not** take part in pool activities. Pool regulations are to be strictly enforced, including those regarding showers before entering the pool. Clean bathing suits are required in the swimming pool, and **may not** be the same ones used for river play. Closed-toe shoes are recommended for river play. Wet clothes, from either the pool or river, may not be worn in the dining hall.
- Chairs for outdoor use (marked with red paint) are stored on the west porch of the dining hall. Do not take chairs out of the dining hall to the shelter. Please do not mix outdoor chairs with the ones found in the dining hall.
- **Please NO NEW FIRE SITES!** Campfires are permitted only in designated campfire rings. Extinguish all fires before you leave. Place trash and recyclables into designated barrels in the camping areas. No fireworks are allowed.

## Sleeping Quarters

- At least one adult must stay in each room/cabin to supervise children and youth who stay there.
- Food and beverages are not permitted in the cabins or bunk houses as they attract rodents, bugs and other unwanted guests.
- We ask that there be no overnight lodging in the Buffalo Room located in the dining hall building.

(continued)

## Kitchen and Dining Hall at Main Camp

- To assist in environmental conservation, we ask groups to either bring their own **reusable** dishes or to use our dishes and wash them. We have table service for about 200 people, and will be glad to run the dishwasher for your group, if numbers are more than 30. We will not wash your personal dishes for fear of damage. (If the dishwasher is used, please provide **2-3 volunteers from your group to help with dishes** at each mealtime.) Hand washing of dishes is a great time for socializing and fun - take advantage of it!
- Groups in the Retreat Center are responsible for their own dishes. Please use reusable dishes or camp table service.

## PLEASE - NO GRAFFITI WRITING!

### Responsibility Policy

Camp Mennoscah Association, owner of Camp Mennoscah, is not responsible for personal injury or illness or loss of or damage to any property which rental groups or individuals may sustain in connection with their use of the facilities of Camp Mennoscah. By entering into an agreement to use the facility, a group agrees to indemnify, defend and hold harmless the Association and its agents from and against any loss, liability, or damage related to any such personal injury or illness or loss of or damage to personal property. Camp Mennoscah Association does not provide accident or sickness insurance for rental groups. It is your responsibility to provide this for your group.

### A Final Word

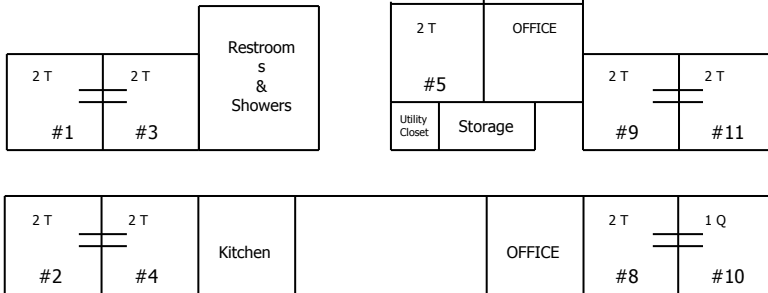
As you approach and leave camp, the road past the Bluestem house is very dusty. Please instruct your group to be courteous and observe posted speed limits of **20 mph** into and out of camp. Thank you very much for helping us out!

**Enjoy your stay at Camp Mennoscah  
and come again soon!**

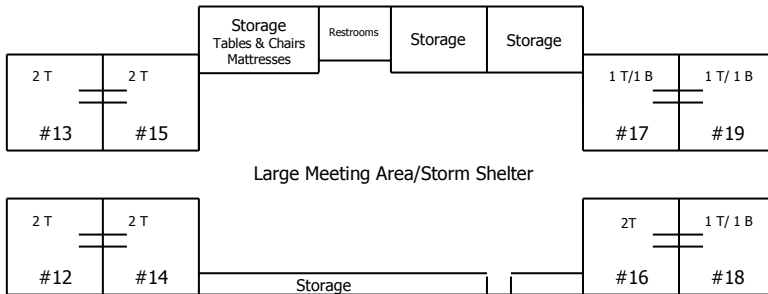


# Retreat Center Room Layout\*

## Upper/Main Level

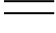


## Lower Level



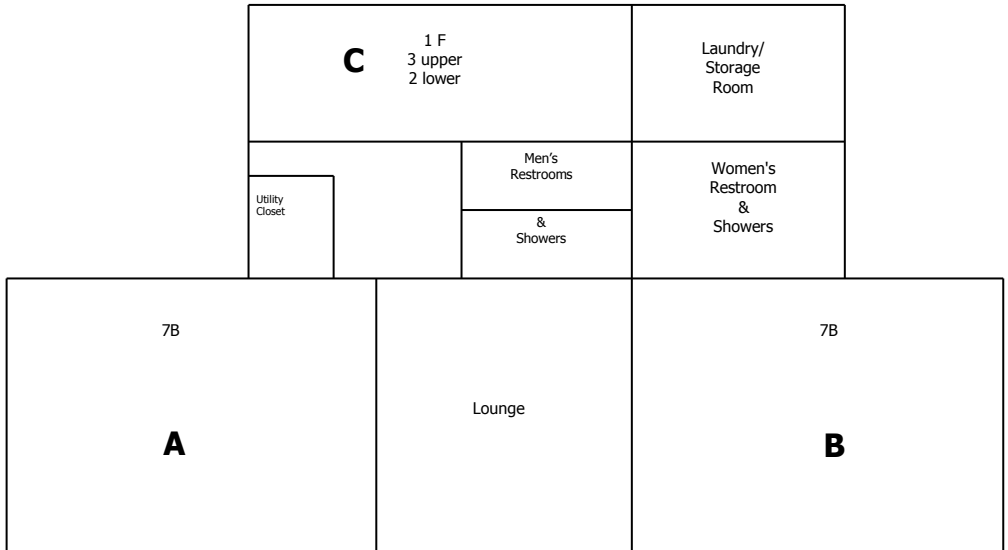
## Retreat Center

The Retreat Center has 17 bedrooms equipped with individual temperature controls for heating and air. Most rooms consist of two single beds with a shared bathroom and shower. There is a fully equipped kitchen (table setting for 50), dining room, and a meeting/multi-purpose room which also serves as a storm shelter. Groups provide and prepare their own meals. Beds have pillows and a comforter. Please bring your own towels and personal toiletries. Bed linens (pillowcase, flat/flitted sheets) are available for rental. Kitchen towels and dish cloths are provided.

\*T = twin beds    B = bunk beds    Q = queen bed    F = full bed     = semi-private bath

**\*\*We do our best to keep these floor plans updated, but the number and type of beds in each room may change. Please contact us to confirm, if needed.\*\***

# Sunflower Room Layout\*



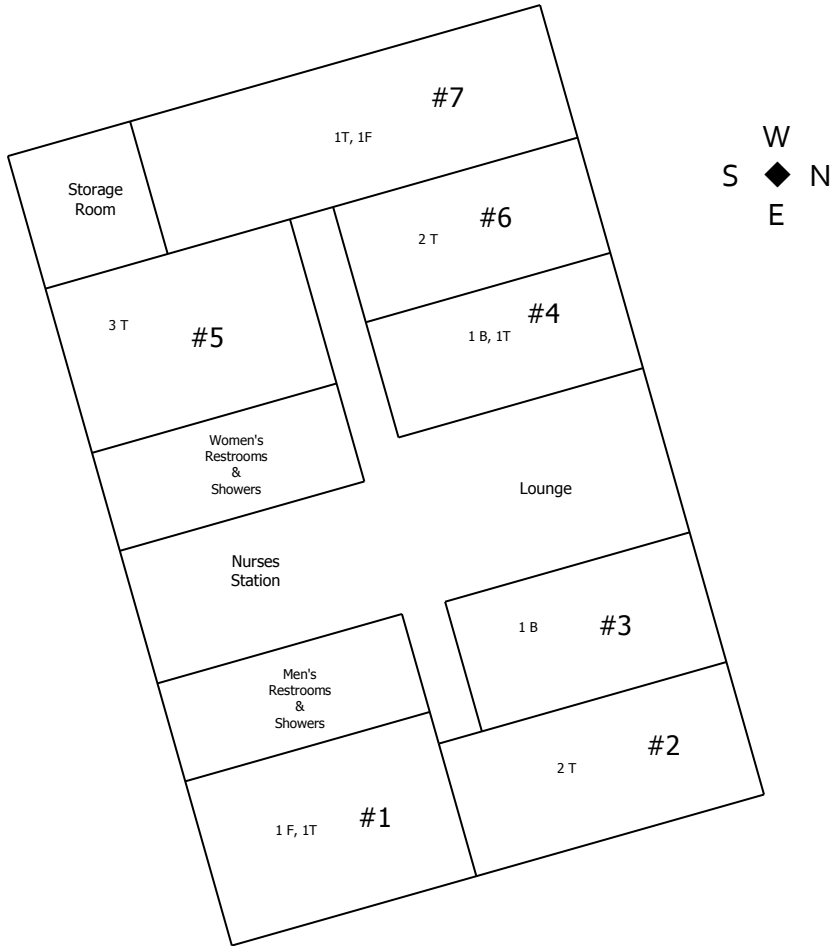
The Sunflower building is centrally heated and cooled. There are a total of 34 beds. Women's and men's bathroom facilities are shared with all who stay in this building.

\*T = twin beds B = bunk beds F = full bed

**\*\*We do our best to keep these floor plans updated, but the number and type of beds in each room may change. Please contact us to confirm, if needed.\*\***

# Cottonwood Room Layout\*

The Cottonwood building has 15 beds and is centrally heated and cooled. Women's and men's bathroom facilities are shared with all who stay in this building.



\*T = twin beds B = bunk beds F = full bed

**\*\*We do our best to keep these floor plans updated, but the number and type of beds in each room may change. Please contact us to confirm, if needed.\*\***



# Bluestem

The Bluestem house is located on the township road before you reach the main camp driveway. The house is centrally heated and cooled. Both levels of Bluestem require guests to climb at least a few stairs.

There are 3 bedrooms on the main floor. Each room has a double bed; one room has two double beds. There are two full baths on the main floor. Also on the main floor are a living room and a large kitchen area that is fully equipped with refrigerator, stove, pots & pans, and table settings for 20. Please confirm any specific needs with camp staff.

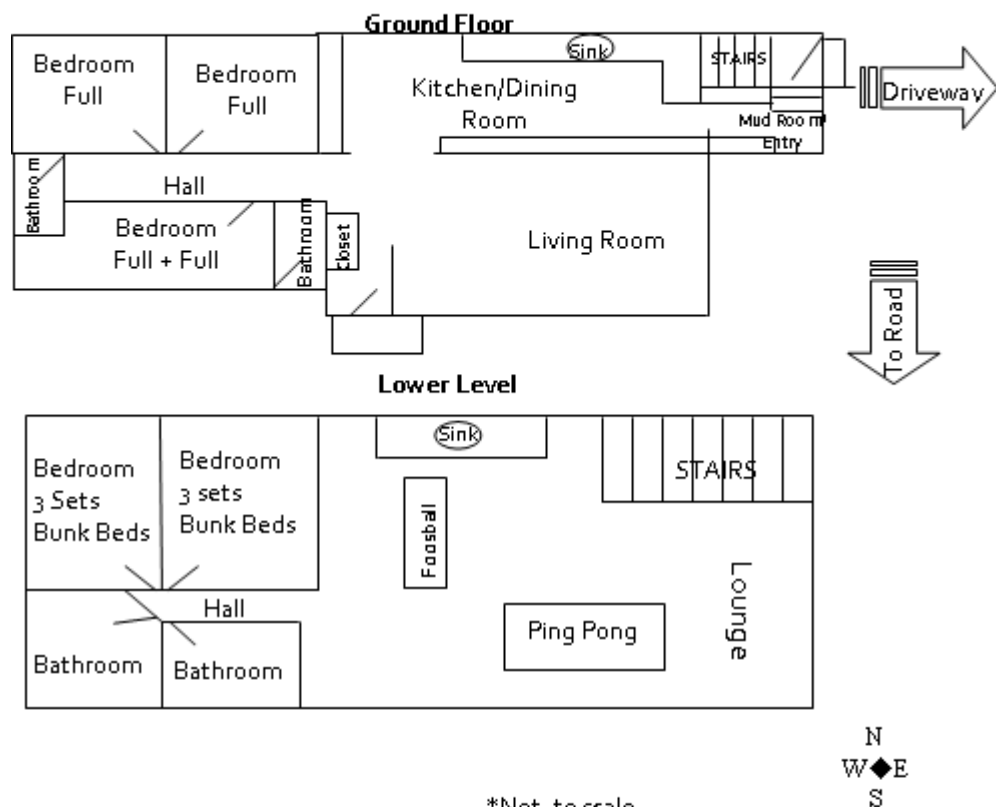
The basement has two rooms with 3 bunk beds each and two full bathrooms. The basement is a gathering area with foosball & ping pong tables. All activity areas at Main Camp are shared with all other groups (playground, the river, sports fields, canoes, etc.). Groups are asked to be aware of when their activities may disrupt worship services or activities of others using the camp grounds. Tenting is available to the east of the house. RV hookups are not available. Maintenance and farmland areas are off limits to guests.

Groups provide their own bedding and prepare their own meals. Beds have pillows and a comforter. Please bring your own towels and personal toiletries. Bed linens (pillowcase, flat/flitted sheets) are available for rental. Kitchen towels and dish cloths are provided.

As with all Camp Mennoscah facilities, groups are expected to clean and leave Bluestem in a condition ready for the next group to use. Instructions for cleaning are posted.

\*\*Please note that some retreat supplies are not available for the Bluestem house. Some supplies not available include use of a PA system, the electric keyboard, and TV/DVD.

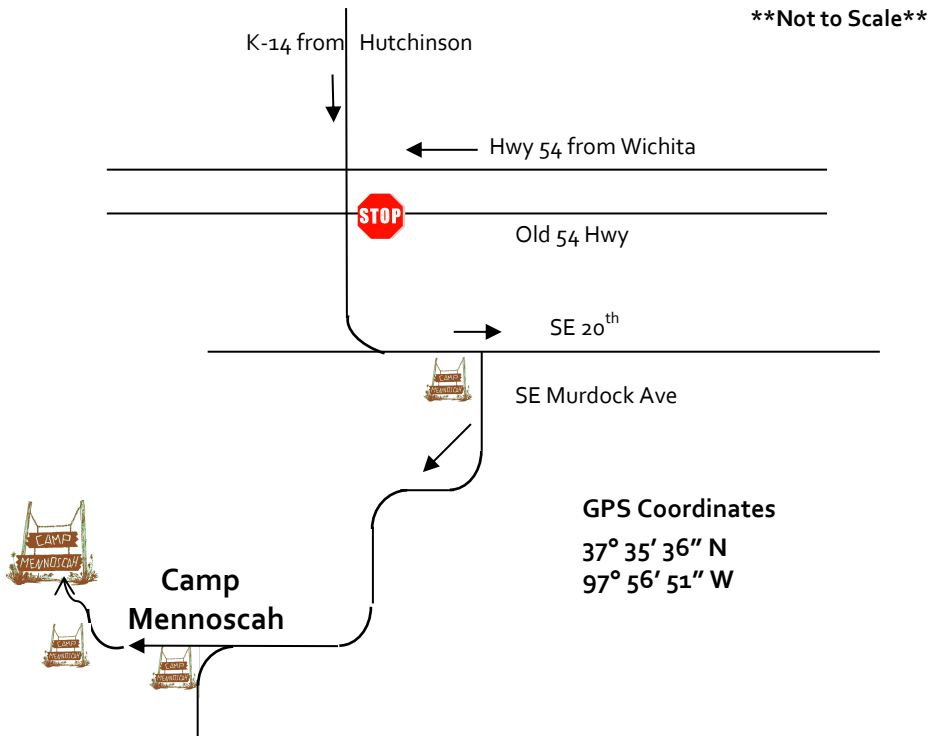
# Bluestem Room Layout\*



\*Not to scale

\*\*Please note that some retreat supplies are not available for the Bluestem house. Some supplies not available include use of a PA system and TV/DVD.

# Directions to Camp Mennoscah



**from Wichita:** Take Hwy 54 West to K-14 (Hutchinson/Murdock exit). Turn left (south); go straight (past stop sign) across Old Hwy 54. Turn right (south) onto SE Murdock at the first Camp Mennoscah sign and continue through Murdock on blacktop road until you get to the 2<sup>nd</sup> Camp Mennoscah sign. Turn off onto the dirt road and follow to camp driveway.

**from Hutchinson:** Take K-14 South about 30 miles and turn right (south) onto SE Murdock at the first Camp Mennoscah sign and continue through Murdock on blacktop road until you get to the 2<sup>nd</sup> Camp Mennoscah sign. Turn off onto the dirt road and follow to camp driveway.

Go to [www.campmennoscah.org](http://www.campmennoscah.org) for further directions or give us a call.



## Camp Mennoscah

PO Box 65, 9458 SE 40th St  
Murdock, KS 67111  
620-297-3290  
[www.campmennoscah.org](http://www.campmennoscah.org)